

**State of Wyoming Corner Record**

(In compliance with the CORNER PERPETUATION AND FILING ACT, Wyoming Statutes, 1977,  
Section 36-11-101, et seq., and the Rules and Regulations of the Board of Registration for Professional  
Engineers and Professional Land Surveyors)

The reverse side of this form may be used if more space is needed.

*The Record of the original survey and the citation of the source of the historical information (if the corner is lost or obliterated). The description of the corner monumentation evidence as found and/or the monument and it's accessories as established to perpetuate the location of this corner. A sketch of the relative location of this Monument, accessories, and reference points with the course and distance to adjacent corner (s) (if determined during this Survey). The Method and Rationale used for the reestablishment of lost and obliterated corner.*

G.L.O.: as taken from the official map of the survey of the 3rd Standard Parallel North : "I do hereby certify that the above Diagram of the West boundary of Township 12 North R.69 W., and the 3rd Correction Line Ranges 65,66,67,68 & 68 West of the 6th Principal Meridian in Colorado, as Surveyed by William Ashely under contract dated June 20th 1867 and ....is in strict conformity with the approved field notes on file in this office."

Surveyor General's Office

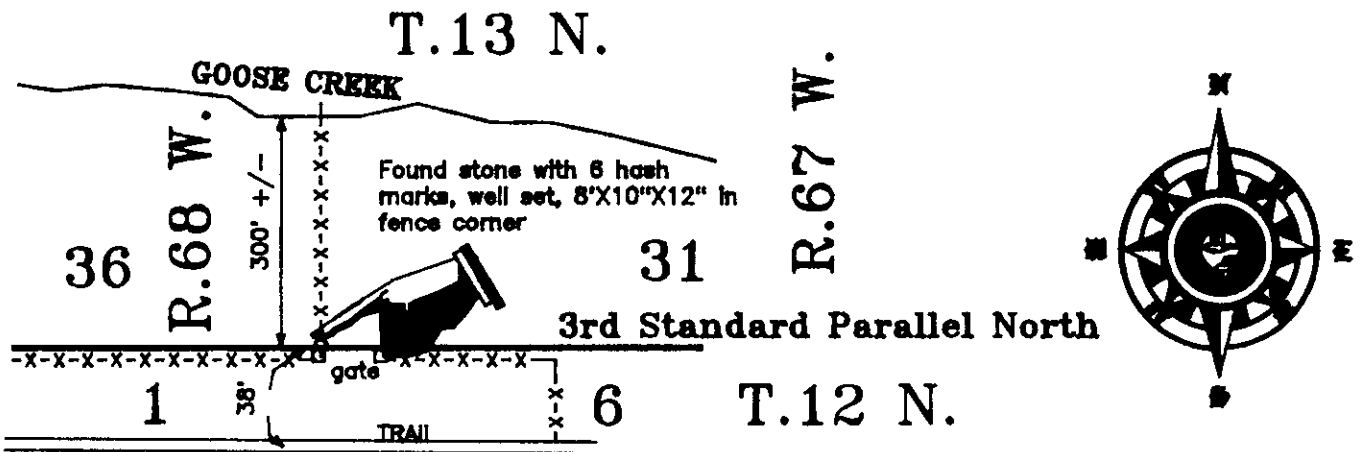
Denver, Colorado Territory, June 7th 1870

West between Sections 6 & 31 of T.12 N. & T.13 N.; 14.00 chains Leave Meadow Land at the foot of the Bluff bears S.70° E.;

16.00 chains, top of the bluff; 40.00 chains, set Boulder Stone 14'X8"X6" for 1/4 section corner; 80.00 chains to a point were I set a Boulder Stone 5'X10"X8" with a Stone Mound

for T.13 N. Ranges 67 & 68 West Standard Corner.

FOUND: Stone 8"X10"X12" with 6 hash marks on the East side, well set in fence corner, Measures a bearing of N89°30'31"W a distance of 2630.69 feet (39.859 chains) [801.834 Metres] to the 1/4 stone found.



Date of Field Work: MAY 2000

Office Reference: DUCK CREEK

*Cross Index Diagram*

T.13 N. R.67 W. of the 6th P.M.

	1	2	3	4	5	6	7	8	9	10	11	12	13	14	15	16	17	18	19	20	21	22	23	24	25
A																									
B																									
C																									
D																									
E																									
F																									
G																									
H																									
I																									
J																									
K																									
L	18	17	16	15	14	13	12	11	10	9	8	7	6	5	4	3	2	1							
M																									
N																									
O	19	20	21	22	23	24	25	26	27	28	29	30	31	32	33	34	35	36							
P																									
Q																									
R																									
S	36	29	28	27	26	25	24	23	22	21	20	19	18	17	16	15	14	13	12	11	10	9	8	7	
T																									
U																									
V																									
W																									
X	31	32	33	34	35	36																			
Y																									
Z																									

3rd Standard Parallel North

GCDB: T.13 N. R.67 W. 100100  
T.13 N. R.68 W. 700100

Z~25

Corner Name: Std Cor Section: 36 31  
T.13 N. Ranges 67 & 68 West

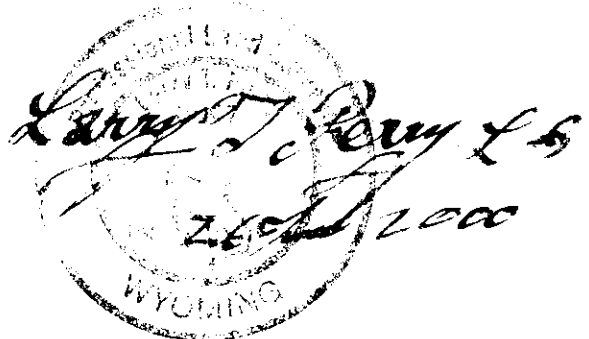
T. N. R. W. 6th P.M. Cross Index No.

Z~1

Firm/Agency, Address  
Terrestrial Surveying & Mapping Co.  
"Your Friendly Neighborhood Surveyor"  
1127 Terry Ranch Road  
Cheyenne, Wyoming 82007  
Telephone Number: (307) 634-9360

This Corner Record was prepared by  
me or under my direction and  
supervision.

SEAL & SIGNATURE



RECORDED 6/26/2000 AT 10:28 AM REC# 276189 X# 1558 PG# 7  
DEBRA K. LATHROP, CLERK OF LARAMIE COUNTY, WY PAGE 1 OF 1